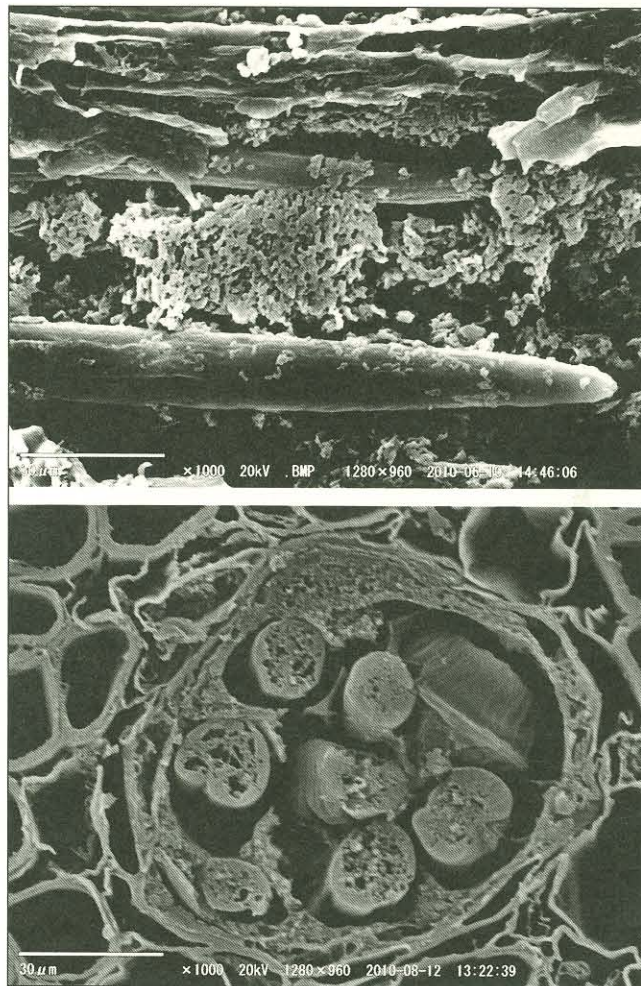


# JOURNAL of NEMATOTOLOGY

J43

The Official Journal of The Society of Nematologists

Volume 44, Number 3, September 2012



Scanning electron micrographs of the pinewood nematode,  
*Bursaphelenchus xylophilus*

**Journal of Nematology 44(3):237-312 (2012)**  
**Hanover, Pennsylvania**

ISSN 0022-300X

**CONTENTS**  
**JOURNAL OF NEMATODOLOGY**

Vol. 44, No. 3

September 2012

**Contributed Papers**

**Management**

- Population Dynamics of *Dactylella oviparasitica* and *Heterodera schachtii*: Toward a Decision Model for Sugar Beet Planting. JIUE-IN YANG, SCOTT BENECKE, DANIEL R. JESKE, FERNANDO S. ROCHA, JENNIFER SMITH BECKER, PATRICIA TIMPER, J. OLE BECKER, AND JAMES BORNEMAN..... 237
- Soil Nematode Responses to Crop Management and Conversion to Native Grasses. SHABEG S. BRIAR, CORINNE BARKER, MARIO TENUTA, AND MARTIN H. ENTZ..... 245

**Microscopy**

- Scanning Electron Microscopy of Pine Seedling Wood Tissue Sections Inoculated with the Pinewood Nematode *Bursaphelenchus xylophilus* Previously Prepared for Light Microscopy. YASUHARU MAMIYA..... 255
- A Technique for Making High-Resolution Megapixel Mosaic Photomicrographs of Nematodes. JON D. EISENBACK..... 260

**Entomopathogenic Nematodes**

- Optimization of a Host Diet for *in vivo* Production of Entomopathogenic Nematodes. DAVID SHAPIRO-ILAN, M. GUADALUPE ROJAS, JUAN A. MORALES-RAMOS, AND W. LOUIS TEDDERS..... 264

**Resistance**

- Evaluation of Protocol for Assessing the Reaction of Rice and Wheat Germplasm to Infection by *Meloidogyne graminicola*. RAMESH R. POKHAREL, JOHN M. DUXBURY, AND GEORGE ABAWAI..... 274

**Molecular Biology**

- Development of PrimeTime-Real-Time PCR for Species Identification of Soybean Cyst Nematode (*Heterodera glycines* Ichinohe, 1952) in North Carolina. WEIMIN YE..... 284

**Taxonomy**

- Characterization of a Root-Knot Nematode Population of *Meloidogyne arenaria* from Tupungato (Mendoza, Argentina). LAURA EVANGELINA GARCÍA AND MARÍA VIRGINIA SÁNCHEZ-PUERTA..... 291
- A New Genus and Species of the Family Rhabdolaimidae (Nematoda), with Descriptions of Two Known Species and Taxonomic Discussion. QUDSIA TAHSEEN, RAZIA SULTANA, RAHMAT KHAN, AND ATHER HUSSAIN..... 302