

In Practice

Continuing education for veterinary practitioners



Investigation of hindlimb lameness in dogs

Cerebrospinal fluid: analysis and interpretation

Musculoskeletal problems in raptors

Diagnosis and management of equine rhabdomyolysis

Personalities and practice performance

Oiling the wheels of change

In Practice

February 2011
Volume 33, Number 2

21 第.8. 2554



IN PRACTICE is published by the BMJ Group on behalf of the British Veterinary Association. It is published 10 times a year.

Articles are commissioned and written in the form of 'opinionated reviews'. All clinical articles are peer-reviewed.

Clinical practice editorial board

Stephen Baines, Graham David, John Fishwick, Hilary O'Dair, Jelena Ristic

Practice management advisory group

Nick Blayney, Rita Dingwall, Peter Gripper, Ewan McNeill, Christine Shield

Editor

Martin Alder

Deputy editor

Kavita Bowry

Assistant editor

Laura Barton

All communications for the editorial department should be addressed to:

The Editor

In Practice
BMJ Group, BMA House,
Tavistock Square,
London WC1H 9JR, UK

T: +44 (0)20 7387 4409

F: +44 (0)20 7383 6418

E: inpractice@bva-edit.co.uk

Annual subscriptions

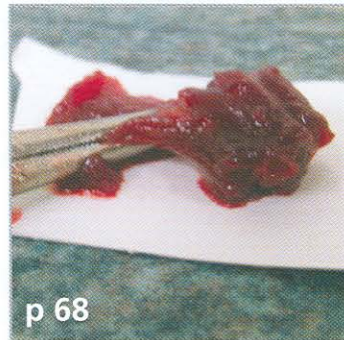
Individual: Print and online £171
Online only £139

For details of US\$, Euro and institutional subscription rates, please visit inpractice.bvapublications.com/site/about/Subslanding.xhtml

Subscription requests should be sent to: Customer Services, BMJ Group, BMA House, Tavistock Square, London WC1H 9JR, UK
T: +44 (0)20 7383 6270
F: +44 (0)20 7383 6402
E: support@bmjgroup.com

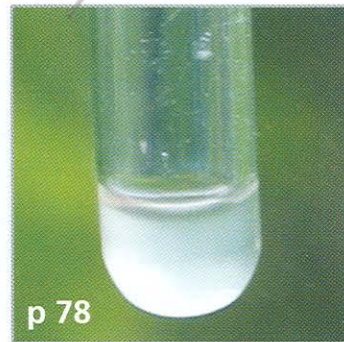
Display advertisement queries should be directed to: Kevan Bowen
T: +44 (0)7768 880410
E: kbowen@bmjgroup.com

© British Veterinary Association
ISSN 0263/841 X



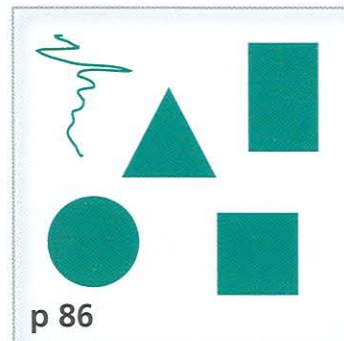
p 68

Muscle damage in horses –
diagnosis and treatment options



p 78

Cerebrospinal fluid – analysis
and interpretation



p 86

What can these shapes tell you
about yourself?

Clinical practice

Avian practice

- 50 Veterinary care of raptors
2. Musculoskeletal problems
Marie Kubiak and Neil Forbes

Companion animal practice

- 58 Investigation of lameness in dogs
2. Hindlimb
Philip Witte and Harry Scott
- 78 Cerebrospinal fluid: analysis and
interpretation in small animals
Mark Lowrie and James Anderson

Equine practice

- 68 Diagnosis and management
of equine rhabdomyolysis
John Keen

Practice management

Recruitment

- 86 Psychogeometrics and behaviour
assessment techniques
Alan Leyland

Business

- 90 Oiling the wheels of change
Ray Girotti

Everyday ethics

Ethical dilemmas in practice

- 94 Violent vet
95 Farm cat with TB

A practitioner ponders

- 96 Keeping up to date

I think they are going to ...



No they are not!

Emepid® is a new licensed anti-emetic and pro-kinetic for dogs and cats

- Contains tried and trusted metoclopramide
- Two formulations available - injectable and oral syrup
- Injectable formulation presented in 10ml multi-dose bottles

Emepid® 

A trusted anti-emetic and pro-kinetic for dogs and cats
at a price that won't turn your stomach!



Further information is available from Ceva Animal Health Ltd 90 The Broadway, Chesham, Bucks HP5 1EG
Emepid® contains metoclopramide (POM-V)